



ASQ CRE Prep course

Lesson VI. A. 2. a.

Maintenance Strategies

RCM

11% might
benefit from
a limit on
operating age

4%

2%

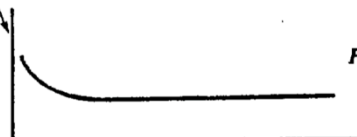
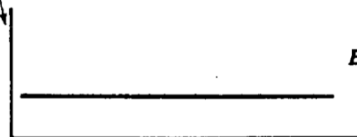
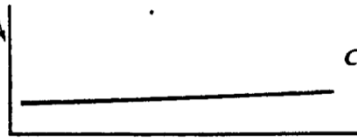
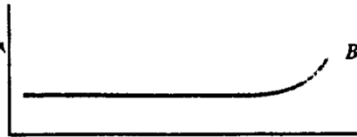
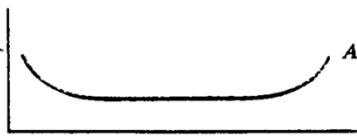
5%

7%

14%

89% cannot
benefit from
a limit on
operating age

66%



Nowlan & Heap

RCM Information

- **What are the functions & expectations of the asset?**
- **How does the asset fail?**
- **What causes each functional failure?**
- **What happens when each failure occurs?**
- **In what way does each failure matter?**
- **What can be done to predict or prevent each failure?**
- **What can be done if prevention is not possible?**



RCM Steps

1. **Design for maintainability**
2. **Perform functional FMEAs**
3. **Categorize the failure distributions**
4. **Determine maintenance task intervals**
5. **Package all tasks into a plan**
6. **Optimize results with data collection**
7. **Analyze results for potential corrective action**



What are the 3
generations of
maintenance?